



SSP

Safety System Products

HOLDX RS2-CC-W

Magnetic guard lock slave, individual, reteachable, 2 x pigtail
M12 8-pin, 600 N locking force

Your advantages

- PLe according to EN 13849-1
- High Coded according to EN 14119
- From little windows up to big safety doors
- Shortest commisioning time
- Pigtail connection reduces cabling effort
- Less down- and setup time, due to maintenance Monitoring
- High tolerance for door offsets
-



To the downloads ►

we simplify safety



Safety System Products

HOLDX RS2-CC-W

In its small and compact design, the **HOLDX RS** enables a locking force of **600 N**. In addition to the holding force of the electromagnet, the movable anchor plate has a 50 N permanent magnet that prevents a door from springing open immediately. The integrated RFID safety sensor meets the highest **performance level PLe** according to **EN ISO 13849-1:2016**. An integrated **Bluetooth interface** and the extended LED diagnostics enable smart operation as well as fast diagnostics.

HOLDX R User Tutorials Our HOLDX R User Tutorials are now available as a playlist on YouTube! Our product manager Rico Czernig explains topics like the subsequent magnet calibration or diagnostic data. Have a look at the playlist for HOLDX RL and RS, as well as for our HOLDX Manager!

General data

Item number	1027834
Item number (old)	SP-X-71-001-09
Coding levels	Individually

Safety relevant data

Category (EN ISO 13849-1: 2015)	Cat.4
SIL (IEC 61508: 2010)	SIL3
- Hardware fault tolerance	HFT1
- PFHd	2,24 x 10 ⁻⁹
Service life (EN IEC 62061)	20 Years
Switching current per safety output max.	100 mA (DC-12/DC-13)

Safety data

Performance Level (EN ISO 13849-1: 2015)	PLe
SIL (EN IEC 62061: 2005 + A2: 2015)	SIL CL3

Environmental conditions

Max. storage temperature	-20 °C...+70 °C
--------------------------	-----------------



Safety System Products

HOLDX RS2-CC-W

Max. operating temperature -20 °C...+55 °C

Electrical data

Supply voltage	24 VDC (+10/-15%)
Power consumption (incl. OSSD outputs)	16 W
Rated current (on 24 VDC)	600 mA
No-load current I ₀	60 mA
Amount safety inputs	1x 2-channels
Current consumption per input max.	2,75 mA
Current consumption input magnet ON	1,2 mA
Voltage drop safety output (U _d)	0,75 V
Amount OSSD safety output	1x 2-channels
Safety output - output type	Transistor (PNP)
Residual current safety output (I _r)	0,5 mA
Load capacitive reactance safety output max.	20 nF
Amount diagnosis output	1
Diagnosis output- output type	Transistor (PNP)
Connection type	M12 8-pin, Pigtail 200 mm
Series connection for safe In- and Outputs	max. 30 process locks
Protection class power supply	III
Switching current per diagnosis output max.	100 mA
Design / Connections	2x Pigtail 8-pin
Risk time	75 ms

Mechanical data

Dimensions

Width	45 (35) mm
Length	128,6 (without cabel) mm
Height	33,5 mm

Dimensions of anchor plate

Width of anchor plate	45 (35) mm
Length of anchor plate	108,2 mm
Height of anchor plate	17,5 mm

HOLDX RS2-CC-W

Locking force electromagnet	600 N
Permanent magnet	50 N
Smart resting force	0/ 30 N/ 50 N
Weight process lock	375 g
Weight anchor plate	125 g
Torque (mounting screw) process lock	6 Nm
Torque (mounting screw) anchor plate	6 Nm
Mounting	Screwing with raised head screw M6 Torx with pin
Material housing lock	PBT GF30, Aluminium eloxated black, TPE, PC
Shock resistance	30 g / 11 ms
Vibration resistance	1 g, 5-150 Hz
Switching distance according to DIN EN 60947-5-3:2014-12	
Assured switching distance ON S(ao)	6 mm
Assured switching distance OFF S(ar)	18 mm
Typical switching distance S(n)	11 mm
Repeat accuracy R switching distance	<0,5 mm
Hysteresis	2 mm
General periods	
Readiness delay t(v)	5000 ms
Start delay actuator t(on)	75 ms
Safety function times	
Switch-off reaction time inputs	max.3 ms
Switch-off reaction time anchor plate - Outputs t(off)	max. 75 ms
Test impulse length OSSD Sicherheitsausgänge	0,3 ms

Equipment

Safety switches

M12-8 pin, resistance 120 Ohm

End plug HOLDX R1

1027881

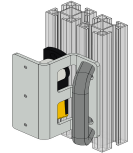


HOLDX RS2-CC-W

Mounting fitting HOLDX RS for wing doors with handle

HOLDX RS-Z-MF1

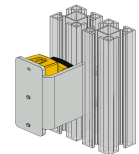
1027877



Mounting fitting HOLDX RS for wing doors incl. screws

HOLDX RS-Z-MF2

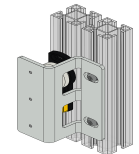
1027882



mounting bracket for HOLDX RS, for hinged doors mounting on the inside

HOLDX RS-Z-MF3

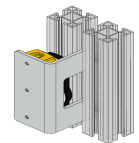
1027884



Mounting fitting HOLDX RS for sliding doors

HOLDX RS-Z-MS1

1027878



Safe control technology

MOSAIC M1

1019811



Standard safety relay 1 safety function

S2 series

1019455



Wireless Safety

Safety Simplifier | for HOLDX R1









S14LDRB-H08-E2-I1-Q1A0-Q

1029203

2A0-Q3C0-Q4I0-W06



HOLDX RS2-CC-W

Safety Simplifier for two HOLDX R1	S14LDRB-H08-E2-I1-Q1A0-Q 2I0-Q3C0-Q4I0-W10	1029207	
Safety Simplifier for HOLDX R1	S14LDRB-H09-E2-I1-I1-Q1A0- Q2A0-Q3C0-Q4I0-W07	1044508	
Safety Simplifier for two HOLDX R1	S14LDRB-H09-E2-I1-I1-Q1A0- Q2I0-Q3C0-Q4I0-W11	1044509	
Safety Simplifier for HOLDX R1	S14LDRB-H0A-E2-I1-I1-I1-Q1 A0-Q2A0-Q3C0-Q4I0-W08	1044603	
Safety Simplifier for two HOLDX R1	S14LDRB-H0A-E2-I1-I1-I1-Q1 A0-Q2I0-Q3C0-Q4I0-W12	1029209	
Safety Simplifier for HOLDX R1	S14LDRB-H0A-E2-I1-I1-K4-Q1 A0-Q2A0-Q3C0-Q4I0-W09	1044507	
Safety Simplifier for two HOLDX R1	S16LDRB-H0A-E2-I1-I1-K4-Q1 A0-Q2I0-Q3C0-Q4I0-W13	1044490	
Safety Simplifier Standard Module wireless passive distributor	S16LDRB-H10-Q1A0-Q2A0-Q 3C0-Q4A0-Q5U0-Q6U0-Q7U 0-Q8U0-W36	1030121	

HOLDX RS2-CC-W

Downloads

- Operating manual
- Product line
- Catalog
- Software Gateway
- Certificate UL
- Certificate
- EPLAN-Data
- CAD Data
- HOLDX R2 Software Gateway