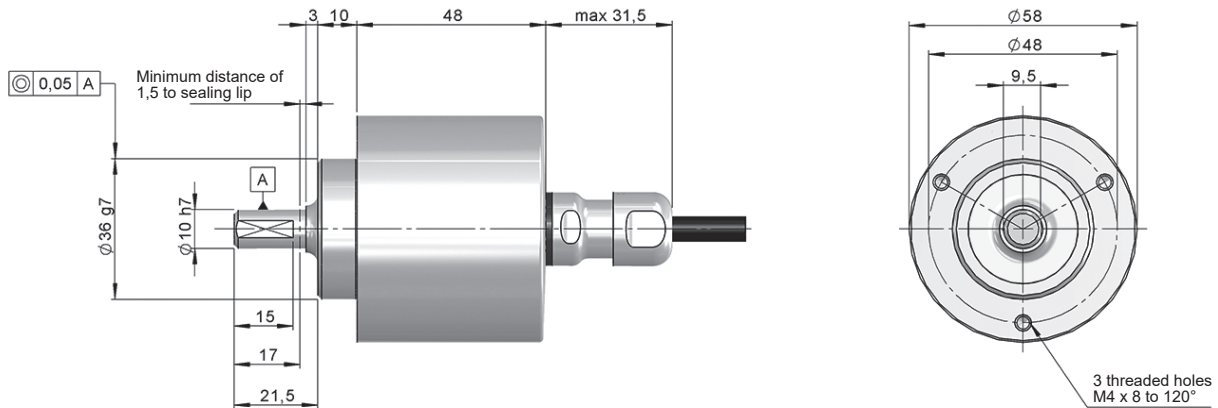
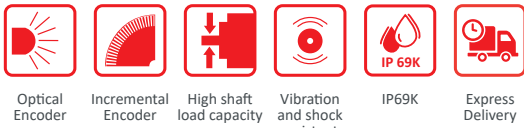


SERIE 10K INOX

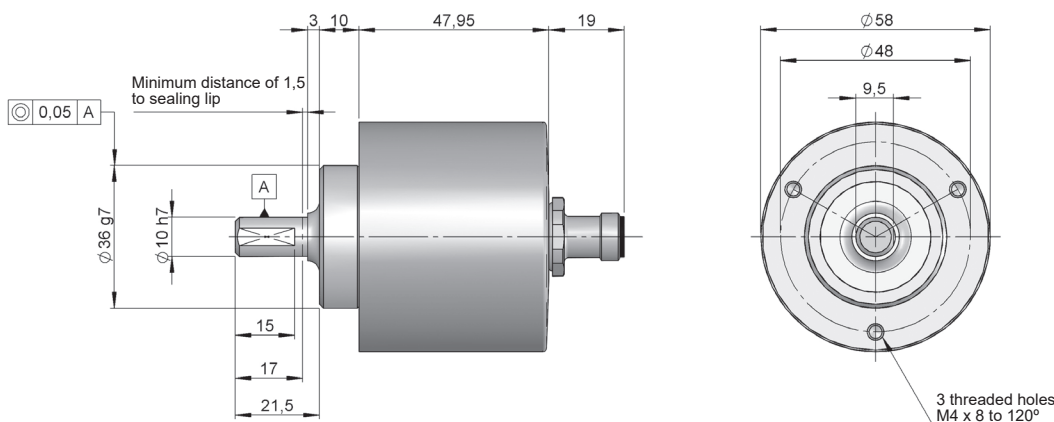
HIGH RESOLUTION INCREMENTAL SOLID SHAFT ENCODER FOR HEAVY DUTY INDUSTRIAL APPLICATIONS



- Resolution up to 50.000 pulses per turn
- External diameter 58 mm
- Shaft \varnothing 10 mm
- Specially designed for the food and pharmaceutical industry
- Protection class IP69K according to DIN EN 60529
- Connection by cable (other cable length available) or M12 connector appropriate for the food and pharmaceutical industry
- ECOLAB certification
- Designed according to EHEDG criteria



Drawing Shaft \varnothing 10x20 mm, Connection Axial cable, without flange



Drawing Shaft \varnothing 10x20 mm, Connection Axial cable M12 8p CCW, without flange



SERIE 10K INOX

HIGH RESOLUTION INCREMENTAL SOLID SHAFT ENCODER FOR HEAVY DUTY INDUSTRIAL APPLICATIONS

IP69K

| REFERENCE | | | | | | | | Reference example: 10K-11289-1024 |
|-----------------------------|--------------------------|--------------------------|---|--|--|---|--|-----------------------------------|
| Serie | Solid shaft | Flange | Output signals | Connection | Power Supply / Electronic output | Pulses number | Special customer | |
| 10K - | <input type="checkbox"/> | <input type="checkbox"/> | <input type="checkbox"/> | <input type="checkbox"/> | <input type="checkbox"/> | <input type="checkbox"/> <input type="checkbox"/> <input type="checkbox"/> <input type="checkbox"/> <input type="checkbox"/> <input type="checkbox"/> | <input type="checkbox"/> <input type="checkbox"/> <input type="checkbox"/> <input type="checkbox"/> <input type="checkbox"/> | |
| 10K. Stainless Steel | 1. Ø 10x20 mm (*) | 1. None | 1. A \tilde{A} +B \tilde{B} +0 \tilde{O} 2. A \tilde{A} +B \tilde{B} | 8. Axial cable (**) K. Axial M12 8p CCW (***) | 0. 11...30 VDC / NPN Open collector 11...30 VDC 6. 11...30 VDC / RS422 5 VDC (compatible TTL) 7. 5 VDC / RS422 5 VDC (compatible TTL) 9. 11...30 VDC / Line driver differential Push-Pull 11...30 VDC | (****) | | |

Order your reference
Step file 3D

info@encoderhohner.com
service available in 24 h

(*) Useful shaft surface, max. 17 mm.

(**) Standard cable length 2m, other length available on order.

(***) Female connector not included. Code to order in accessories.

(****) 10.000 to 50.000 pulses with interpolation. Available 10.000 direct optical pulses without interpolating upon request.

MECHANICAL SPECIFICATIONS

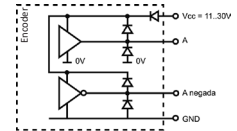
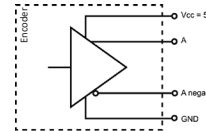
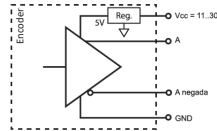
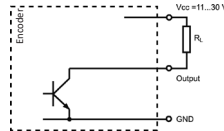
| | |
|--|---|
| Materials | Cover: Stainless Steel AISI316 Housing: Stainless Steel AISI316 Shaft: Stainless Steel AISI316 Cable: TPE |
| Bearings | Ballraces |
| Bearings lifetime | 1x10 ⁹ rev. |
| Maximum number of revolutions permitted mechanically | 3600 rpm |
| Protection against dust and splashes according to DIN EN 60529 | IP69K |
| Rotor inertia moment | 30 gcm ² |
| Starting torque at 20°C (68°F) | ≤ 0,02 Nm aprox. |
| Maximum load permitted on axial shaft | 100 N |
| Maximum load permitted on radial shaft | 100 N |
| Weight aprox. | 0,7 Kg |
| Operating temperature range | -20°C to +80°C |
| Vibration according to DIN EN 60068-2-6 | 100 m/s ² (10Hz...2000Hz) |
| Shock according to DIN EN 60068-2-27 | 1000 m/s ² (6ms) |
| Maximum pulses per turn | 50.000 |
| Axial connection | 2 meters cable (other cable lengths available on order) or Industrial connector M12 8p CCW. Female connector not included. |

SERIE 10K INOX

HIGH RESOLUTION INCREMENTAL SOLID SHAFT ENCODER FOR HEAVY DUTY INDUSTRIAL APPLICATIONS

IP69K

OUTPUT SIGNALS



| OUTPUT CIRCUIT | NPN Open Collector | RS422 (TTL compatible) | RS422 (TTL compatible) | Push-Pull Differential |
|--------------------------------|------------------------|-------------------------------|-------------------------------|-------------------------------|
| Reference code | 0 | 6 | 7 | 9 |
| Power supply | 11...30 VDC | 11...30 VDC | 5 VDC ±5% | 11...30 VDC |
| Output voltage | 11...30 VDC | 5 VDC | 5 VDC | 11...30 VDC |
| Consumption | 40 mA | Typical: 80 mA Max: 160 mA | Typical: 70 mA Max: 150 mA | Typical: 45 mA Max: 150 mA |
| Max. load capability / channel | 40 mA | ±20 mA | ±20 mA | ±30 mA |
| Length of cable allowed | 50 m (24 VDC) | 1200 m | 1200 m | 100 m |
| "Low" signal level | VOL < 0.4 VDC (24 VDC) | VOL < 0.5 VDC | VOL < 0.5 VDC | VOL < 2.5 VDC |
| "High" signal level | VOH > 22 VDC (24 VDC) | VOH > 2.5 VDC | VOH > 2.5 VDC | VOH > VCC – 3 VDC |
| Frequency | 100 kHz | 300 kHz | 300 kHz | 200 kHz |
| Short circuit protection | Not permanent | Yes | Yes | Yes |
| Protection polarity inversion | Yes | Yes | No | Yes |

Channel B leads (90° electric) channel A, view from the shaft, shaft rotating clockwise

CONNECTION

Female connector not included



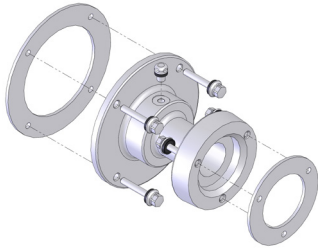
| | Cable TPE 4x2x0,14 95.0008069 | Connector M12 8p CCW |
|---------------|-------------------------------------|----------------------------|
| GND | Brown-White | 1 |
| VCC | Brown | 2 |
| A | Green | 3 |
| B | Blue | 4 |
| ~A | Green-White | 5 |
| ~B | Blue-White | 6 |
| 0 (reference) | Orange | 7 |
| ~0 | Orange-White | 8 |

SERIE 10K INOX

HIGH RESOLUTION INCREMENTAL SOLID SHAFT ENCODER FOR HEAVY DUTY INDUSTRIAL APPLICATIONS

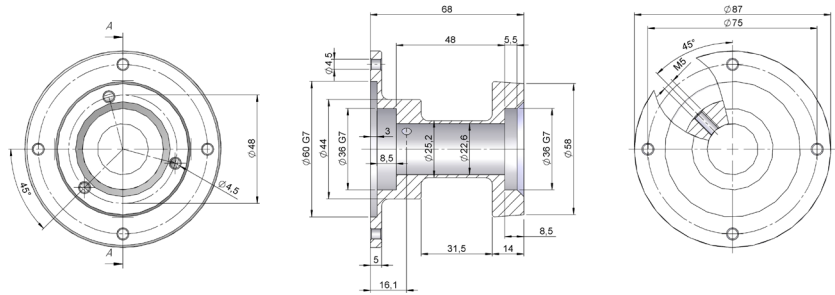
ACCESSORIES

not included



Coupling bell 90.1610

Hygienically designed to be in compliance with EHEDG criteria.



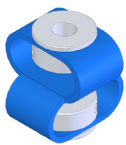
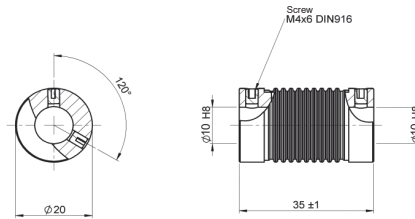
Mounting kit included: Flat seal D8 (1u) Cap M5 (1u), Flat seal Ø87 (1u), Flat seal Ø58 (1u), Sealing washer M4 EHEDG (7u), Screw EHEDG (7u).

* Send us your 3D and we will design the bell for your application.



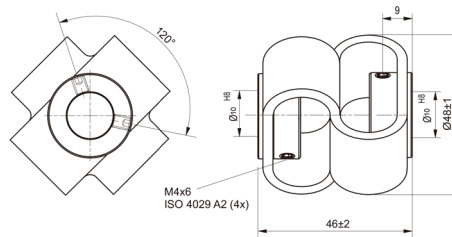
Coupling BFP-2035 10/10

Recommended coupling for 90.1610 coupling bell.



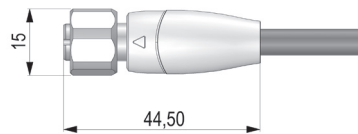
Coupling GFPI 20 10/10

Double loop stainless steel coupling, not compatible with coupling bell 90.1610.



Female connector 95.0007571

For M12 8p CCW connector
1,5 m cable.



* other length available on order